

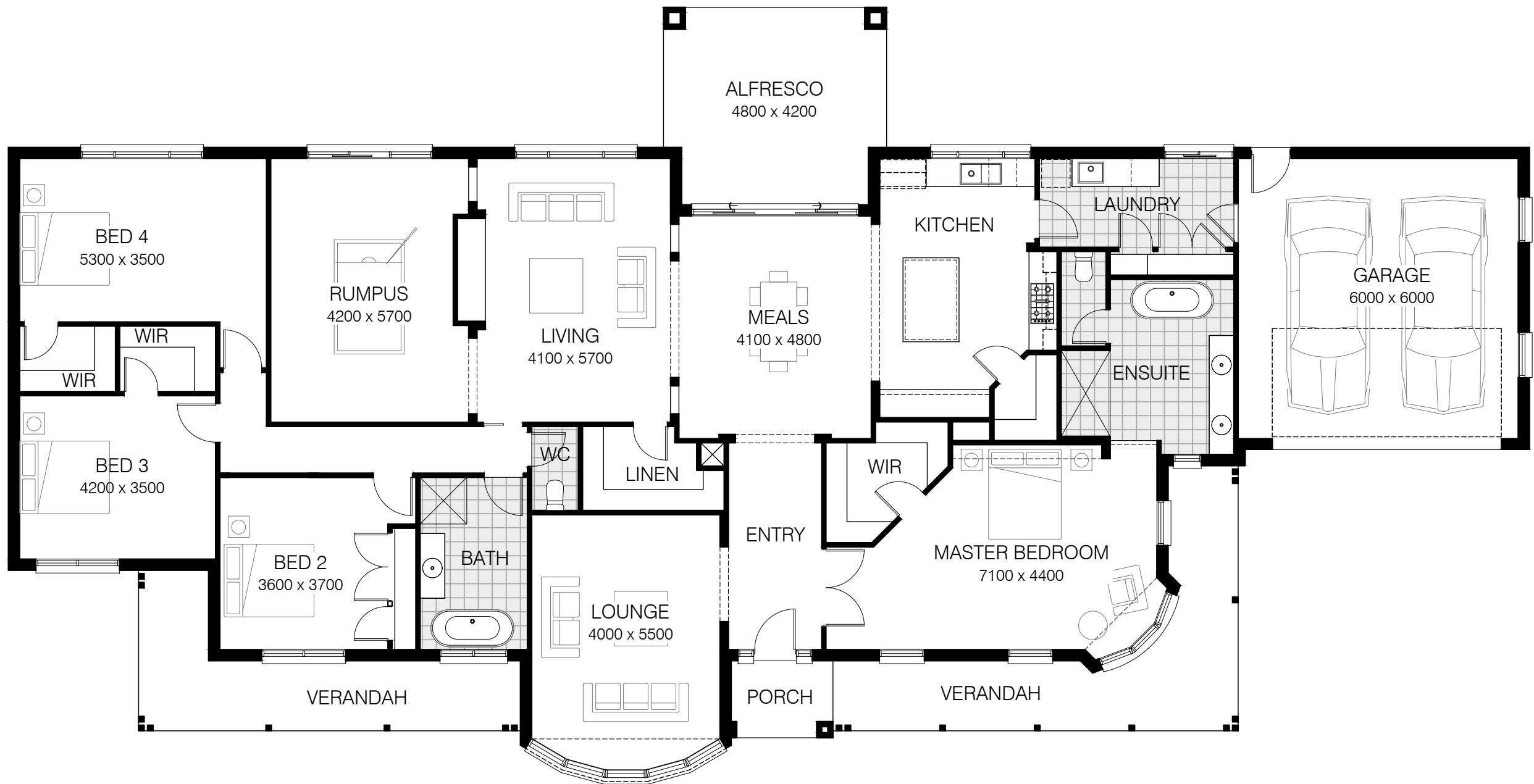
## RIVERSIDE MANOR 302

|                | m <sup>2</sup> | sq    |
|----------------|----------------|-------|
| Living Area:   | 280.81         | 30.23 |
| Porch Area:    | 3.60           | 0.39  |
| Verandah Area: | 34.53          | 3.72  |
| Alfresco Area: | 19.26          | 2.07  |
| Garage Area:   | 40.37          | 4.35  |
| Total Area     | 378.57         | 40.76 |

|                    | m     |
|--------------------|-------|
| Total house length | 16.60 |
| Total house width  | 32.59 |
| Minimum lot width  | 33.99 |

Designs can be modified to suit your block

**Built for you.**



Go to [roseleighbhomes.com.au](http://roseleighbhomes.com.au) or call **03 5622 6777** for more information